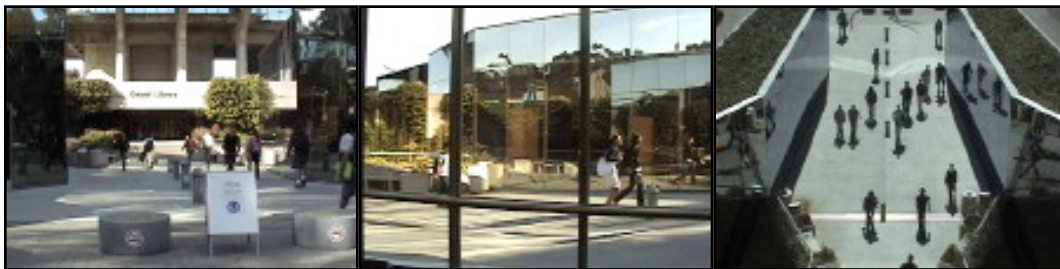


07. Geisel Library

(Pedestrian Entrance /Exit)

Shot Description: Geisel Library, located near Price Center on campus at the University of California, San Diego. The Library has many floors all filled with books and computers. A steady flow of traffic can be seen constantly at the entrance, even during summer sessions.

Three Angles: (1) Front - eye level, set up was on the edge of a semi-circle of concrete surrounding a few trees. Back two legs of tripod were lined up with joint of two cement segments. This is left of the silent tree, looking north. (2) Side - eye-level facing east. Set up was on inside of library in the 'Seuss Room,' shooting out through windows. (3) Oblique - Shot from center of 5th floor of Geisel Library, UCSD, mid-day and facing south. Revealing a birds-eye-view of the walkway just outside the library main entrance.



Filming Status:

Still Shots -

- (1) Front Angle - Shoot complete, needs processing.
- (2) Side Angle - Not enough traffic variation in tight angle.
- (3) Oblique Angle - *Complete*

Panning Shots -

- (1) Front Angle - Not shot
- (2) Side Angle - *Complete*
- (3) Oblique - *Complete*

Traffic-Level Classifier Description: Discriminating between *high*, *medium*, and *low* flows of pedestrian traffic. Three experiments, one per angle.

- (1) **Front - Initial Experiment Results:**
- (2) **Side - Initial Experiment Results:**
- (3) **Oblique - Initial Experiment Results:**

Entering vs Exiting Classifier Description: Discriminating between pedestrians *Entering*, *Exiting*, and a *Balance* of the two. Three experiments, one per angle.

- 1) **Front - Initial Experiment Results:**
- (2) **Side - Initial Experiment Results:**
- (3) **Oblique - Initial Experiment Results:**